



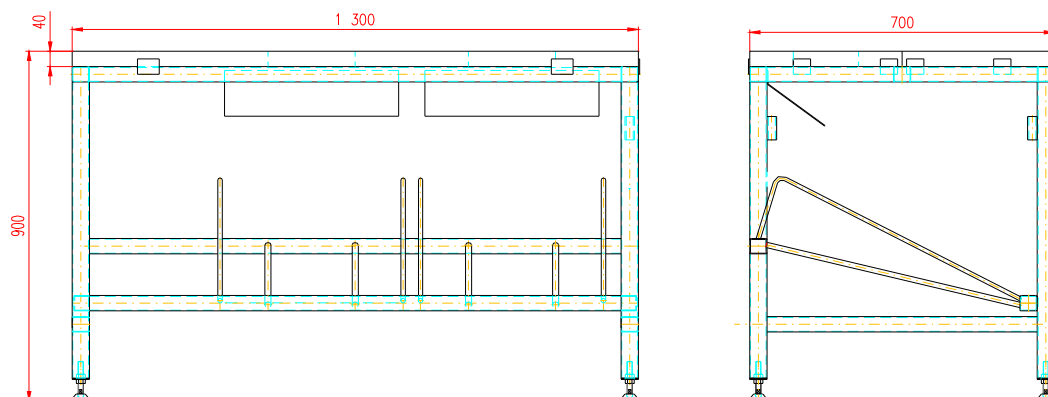
WORKING TABLE FOR MEAT CUTTING with plastic working plate



Strojírna Pálava Maxima s.r.o.

DESÁTKOVÁ 124/15, 623 00 BRNO KOHOUTOVICE
Manufactory: TOVÁRNÍ 34, 679 32 SVITÁVKA, CZECH REPUBLIC
tel: +420 - 516 453 834, fax: +420 - 516 453 834
e-mail: info@s-palava.cz; www.s-palava.cz

WORKING TABLE FOR MEAT CUTTING with plastic working plate



Working table for meat – boning is made from stainless steel material and equipped with plate from health-unexceptionable material – *nierolen*. There are two holes cut out plate, which are used for meat dropping in boxes, which are placed in holders in lower part of the table. Adjustable feet allow stable table settlement. This working table is most often used as a part of boning conveyer and is fixed to its sides.

Technical data

Length	1 300 mm
Width	700 mm
Height	900 mm
Weight	60 kg